

生物质绿色能源一站式服务提供商

BIOMASS GREEN ENERGY ONE-STOP SERVICE PROVIDER

山东博力达 Bolidamachinery

热线/Tel 0531-83311817 0531-83486066 +86-0531-83658366

邮箱/Mail info@rotexmaster.com info@bolidamachinery.com

网址/Web www.bolidajixie.com www.woodpelletmachinecn.com

厂区地址: 山东省济南市章丘区枣园街道大站工业园

Area: Zaoyuan Street, Zhangqiu District, Jinan City, Shandong Province, China

山东宇冠 Rotexmaster

热线/Tel 0531-83766800 0531-83223999

网址/Web www.yuguanjixie.com www.shandongyuguan.cn

厂区地址: 山东省济南市章丘区曹范镇工业园

Area: Caofan Town, Zhangqiu District, Jinan City, Shandong Province, China

印尼分公司 Indonesia Branch

热线/Tel +62-85282296700

邮箱/Mail machine06@bolidamachinery.com

Area: Pergudangan Kencana Trosobo Block C17, Taman Sidoarjo East Java 61257, Indonesia.



BOLIDAMACHINERY
山东博力达机械有限公司



ROTEXMASTER
山东宇冠机械有限公司



智能 制造 绿色 世界

INTELLIGENT MANUFACTURING OFFER GREEN WORLD

山东博力达机械
BOLIDAMACHINERY

山东宇冠机械
ROTEXMASTER



• 发展篇
DEVELOPMENT

2017

山东博力达机械有限公司
Shandong Bolida Machinery Co.,Ltd

2013

山东宇冠机械有限公司
Shandong Rotex Machinery Co.,Ltd

2008

瑞和钢结构厂
Ruihe Steel Structure Factory

2006

金冠钢结构材料厂
Jinguan Steel Structure Materials Factory

2001

金海机械加工厂
JinHai Machinery Processing Factory

· 实力篇

STRENGTH

70

国家专利：拥有国家专利70余项。
National patents: More than 70 national patents

300

员工人数：在职员工300余人，研发团队：30人，项目团队：20人，安装团队：20人。
Number of employees: Over 300 current employees, R&D team: 30 people, Project team: 20 people, Installation team: 20 people

80000

占地面积：80000平方米。
Covering an area: 80000 square meters

30

国内覆盖30多个省市地区
Covering more than 30 provinces, cities and regions in China

100

国外覆盖100多个国家地区
Covering over 100 countries and regions

6000

累计服务全球客户6000余位，年产1600余台主机，2000余台辅机，涉及400余条生产线。
Accumulatively serving over 6000 global customers, annual production more than 1600 sets main machines, over 2000 sets auxiliary equipments, involving more than 400 production line.

服务企业：
Service Enterprise



02

INTELLIGENT MANUFACTURING OFFER GREEN WORLD 智能 制造 绿色 世界

· 荣誉篇
HONOR



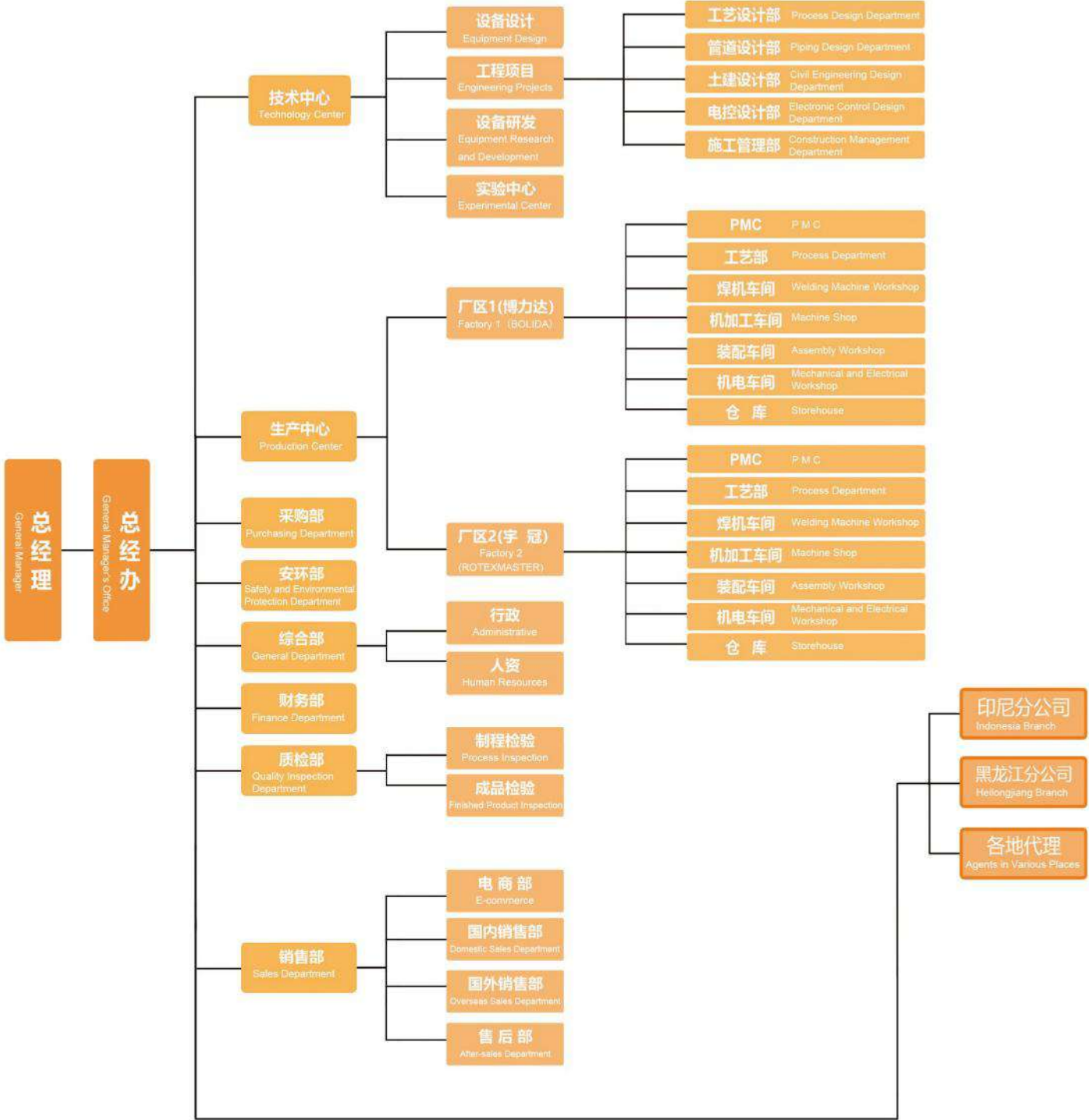
认证体系：Certification system:

ISO9001质量管理体系 ISO1400环境管理体系 ISO45001职业健康安全管理体系
ISO9001 quality management system ISO1400 environmental management system
ISO45001 occupational health and safety management system

CE认证 省级专精特新企业 省级技术中心企业
CE certification Provincial-level specialized innovative enterprise Provincial-level technical center enterprise



· 架构篇
ORGANIZATION







• 目录
CONTENTS

项目工程解决方案.....07-13
Project Engineering Solutions

撕碎破碎设备系列.....15
Shredding & Crushing Equipment Series

生物质能源设备系列.....16-26
Biomass Energy Equipment Series

饲草加工设备系列.....27-28
Forage Processing Equipment Series

数据采集监视控制系统.....29
SCADA

设备配件系列.....30
Equipment Accessories Series

项目工程案例.....31-34
Project Engineering cases



· 项目篇
PROJECTS





• 项目篇
PROJECTS

生物质固体燃料解决方案
Biomass Solid Fuel Processing Solutions

电厂掺烧生物质解决方案
Power Plant Biomass Co-firing Solutions

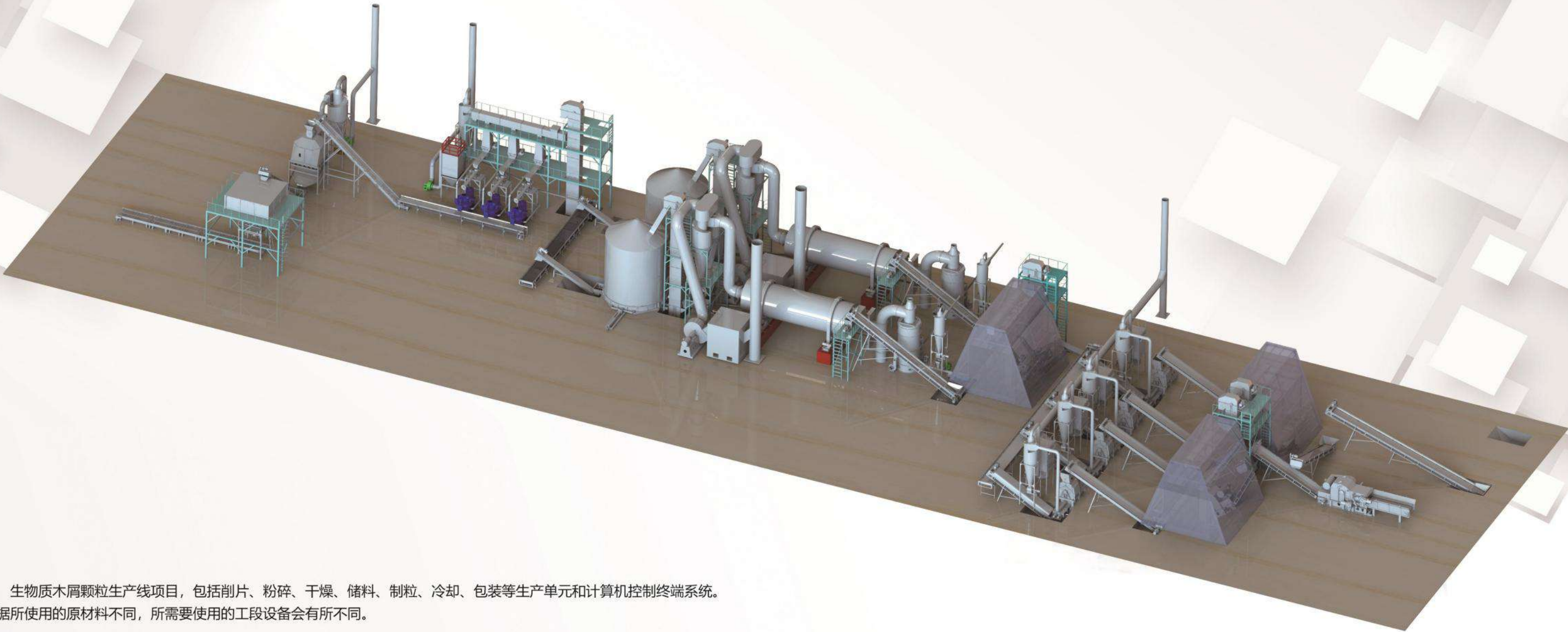
秸秆综合利用解决方案（饲料，燃料）
Straw comprehensive utilization solutions (feed, fuel)

多源固废处理解决方案（大件垃圾、厨余垃圾、干垃圾）
Multi-source solid waste treatment solutions (bulky garbage, kitchen waste, dry garbage)

饲草加工处理解决方案
Forage Processing Solutions

绿色甲醇生物质预处理解决方案
Green Methanol Biomass Pretreatment Solutions

生物质颗粒生产定制化方案 Biomass Pellet Production Customized Solution

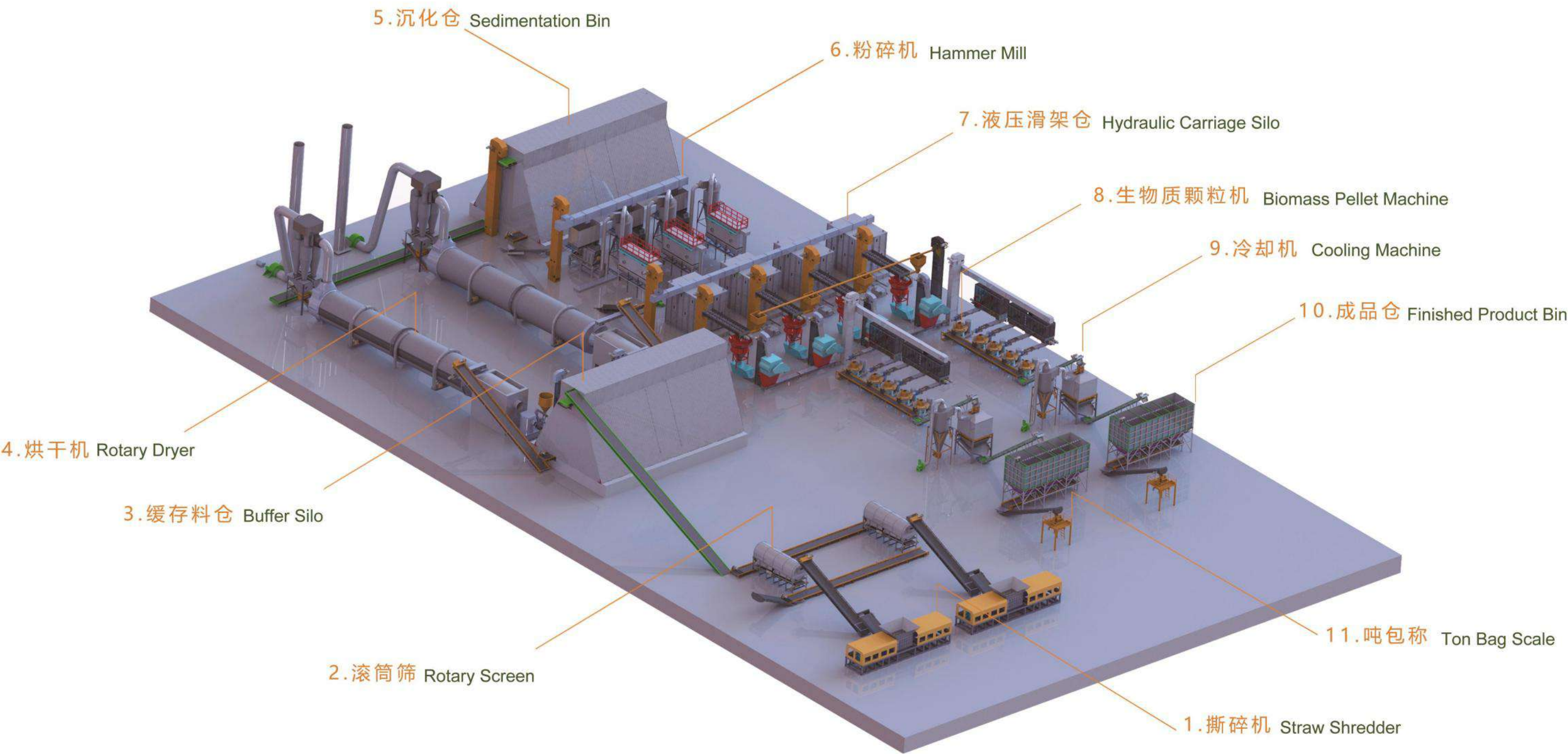


生物质木屑颗粒生产线项目，包括削片、粉碎、干燥、储料、制粒、冷却、包装等生产单元和计算机控制终端系统。
根据所使用的原材料不同，所需要使用的工段设备会有所不同。

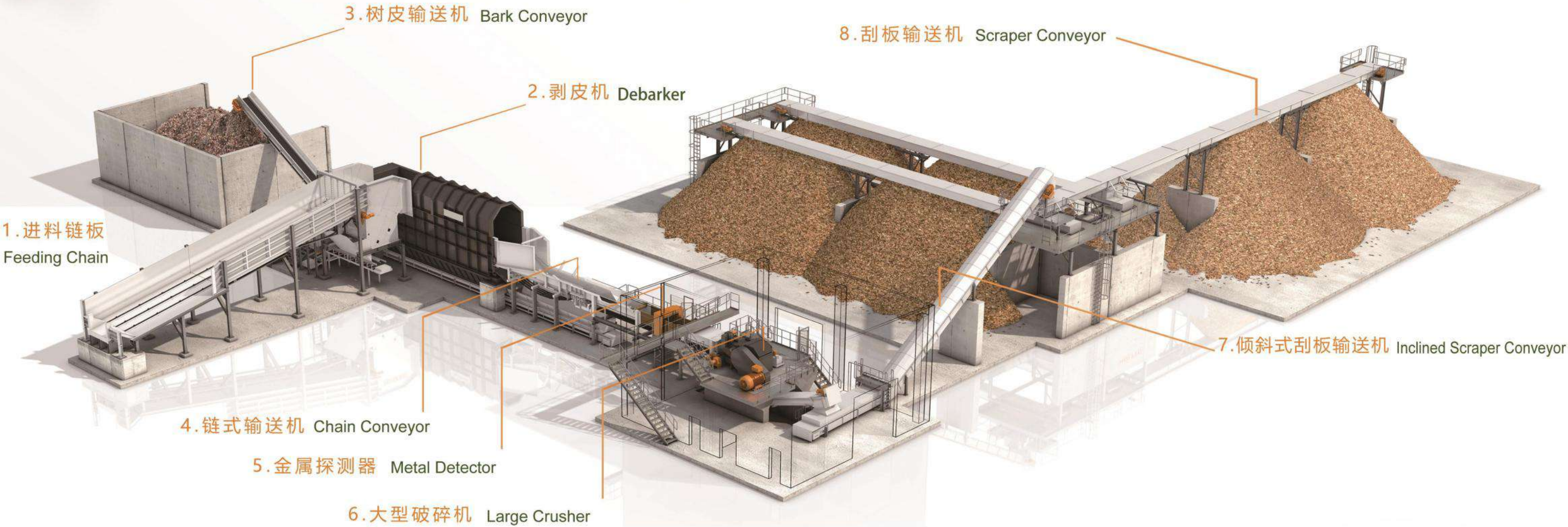
The complete biomass wood pellet production line including chipping section, grinding section, drying section, material storage section, pelletizing section, cooling section, packing section and computer control terminal system.
Depending on the raw materials used, the equipment used will vary.

名 称	Name	剥皮 Debarker	劈木 Splitting	削片 Chipping	粉碎 Grinding	烘干 Drying	制粒 Pelletizing	冷却 Cooling	包装 Packing
进料水分	Feed moisture	40%	40%	40%	38%	38%	13%	10%	9%
出料水分	Discharge moisture	40%	40%	39%	38%	13%	10%	9%	9%
物料利用率	Material utilization	90%	100%	99%	99%	71%	97%	99%	100%
进 料 量	Feed quantity	1.64	1.48	1.48	1.47	1.46	1.04	1.01	1

生物质秸秆清洁化处理方案 **Biomass Straw Clean Process Solution**



生物质颗粒解决方案 **Biomass Pellet Production Line Solution**



大件垃圾固废处理 Large Garbage Solid Waste Process

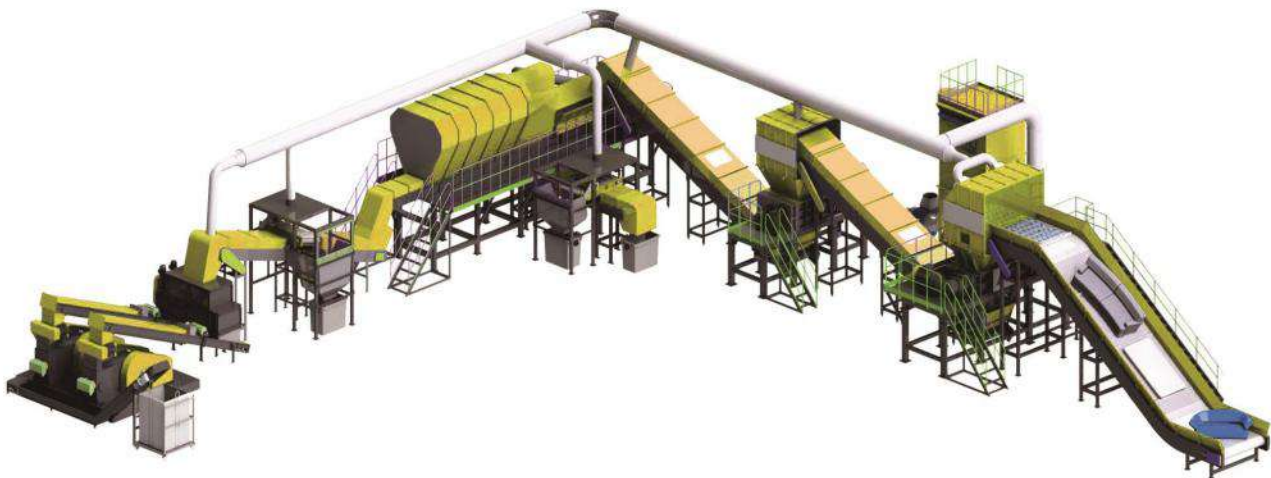


原材料——上料输送机——粗破碎机——磁选机——细破碎机——磁选机——滚筒筛——混料仓——RDF成型机——成品
该预处理线的最终产物只有三种：粒径95%小于60mm的优质替代燃料（RDF/SRF）、以无机物为主的替代原料、可回收铁。整个处理过程高自动化，物料兼容性好无惧大件垃圾、弹簧床垫等异物，核心的破碎机和分选设备稳定度高，RDF制备成本低。

Raw materials - feeding conveyor - rough crusher - magnetic separator - fine crusher - magnetic separator - rotary screen - mixing bin - RDF forming machine - finished products
There are only three final products of the pretreatment line: high-quality alternative fuels (RDF/SRF) with particle size of 95% less than 60mm, alternative raw materials based on inorganic substances, and recyclable iron. The whole treatment process is highly automated, with good material compatibility, no fear of large garbage, spring mattresses and other foreign matters, high stability of the core crusher and sorting equipment, and low preparation cost of RDF.

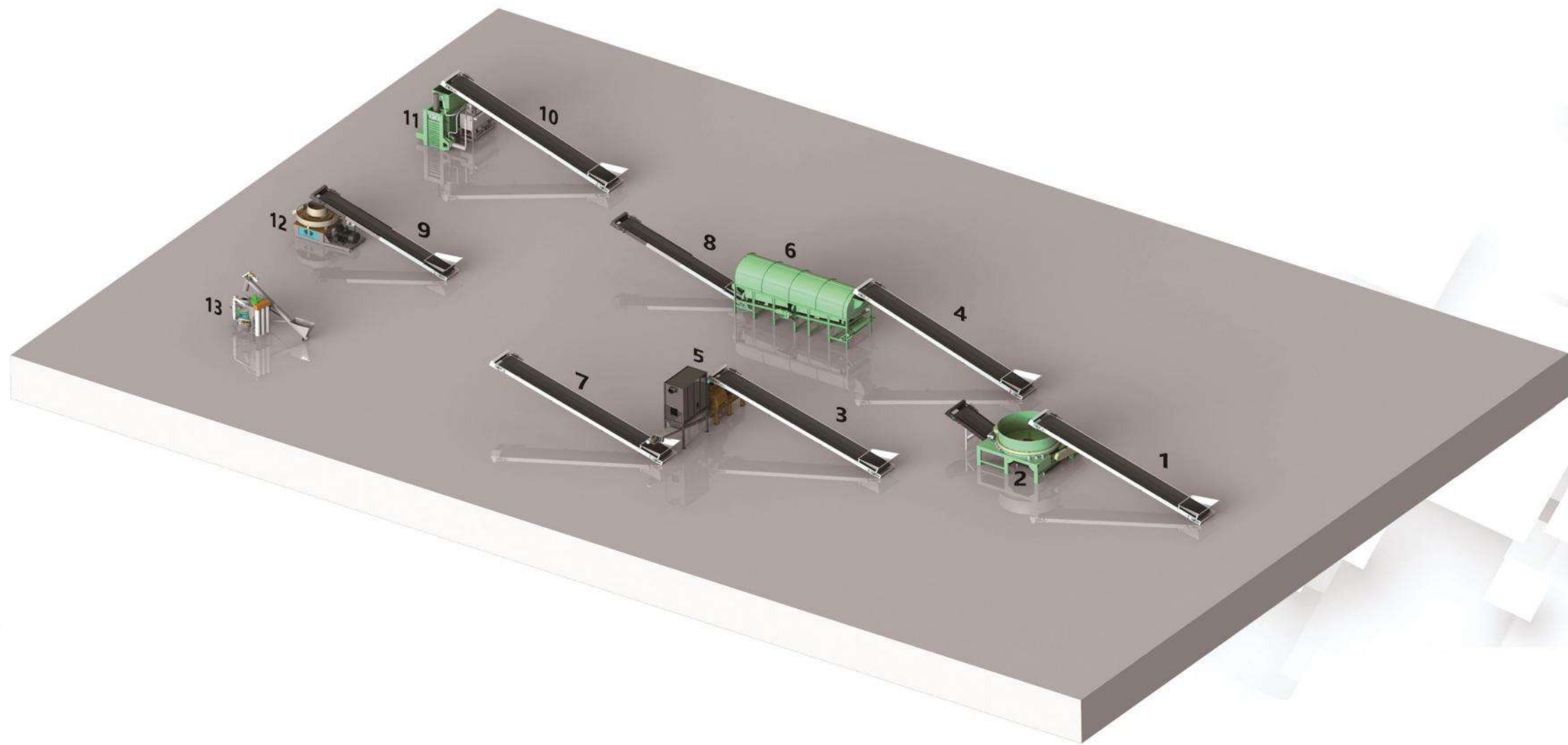
固废减容系列 Solid Waste Volume Reduction Series

园林绿化及装修垃圾处理 Landscaping And Decoration Waste Process



原材料--- 一段撕碎单元----二段撕碎单元---风选单元---磁选单元---RDF成型单元
此方案主要适用于混合型大件垃圾的快速减容处理，其紧凑合理的布局及全程密封结构搭配负压除尘的设计，能够充分有效地抑制粉尘泄漏，实现无尘化工作环境；核心设备为双轴撕碎机，独特的破碎撕碎方式可轻松将任意类型的大件垃圾进行快速破碎，具有处理量大、性能稳定、维护方便等特点，其多重密封的结构设计还可保证设备在恶劣环境下长期稳定运行。

Raw material-First shredding unit-Second shredding unit-Wind separation unit-Magnetic separation unit-RDF forming unit
This scheme is mainly applicable to the rapid volume reduction treatment of mixed large garbage. Its compact and reasonable layout and whole process sealing structure combined with the design of negative pressure dust removal can fully and effectively restrain dust leakage and achieve a dust-free working environment; The core equipment is double shaft shredder. The unique crushing and shredding method can easily crush any type of large garbage quickly. It has the characteristics of large processing capacity, stable performance, convenient maintenance etc. its multiple sealing structure design can also ensure the long-term stable operation of the equipment in harsh environments.



- 1 皮带输送机 Belt conveyor
- 2 秸秆旋切机 Straw rotary cutter
- 3 皮带输送机 Belt conveyor
- 4 皮带输送机 Belt conveyor
- 5 粉碎机 Hammer mill
- 6 无轴滚筛 Shaftless rotary screen
- 7 皮带输送机 Belt conveyor
- 8 皮带输送机 Belt conveyor
- 9 皮带输送机 Belt conveyor
- 10 皮带输送机 Belt conveyor
- 11 打包机 Packing machine
- 12 压块机 Briquetting machine
- 13 颗粒机 Pellet machine

秸秆打包设备 Straw packing equipment	原材料——旋切机——无轴滚筛——打包机——打包成品 Raw materials - Rotary cutter - Shaftless rotary screen - Packing machine - Finished products
秸秆压块设备 Straw briquetting equipment	原材料——旋切机——无轴滚筛——压块机——压块成品 Raw materials - Rotary cutter - Shaftless rotary screen - Briquetting machine - Briquette
秸秆颗粒设备 Straw pelletizing equipment	原材料——旋切机——粉 碎 机——颗粒机——颗粒成品 Raw materials - Rotary cutter - Hammer mill - Pellet machine - Pellet



· 设备篇
EQUIPMENT



双轴撕碎机 Double Shaft Shredder



刀 辊 Knife Roller



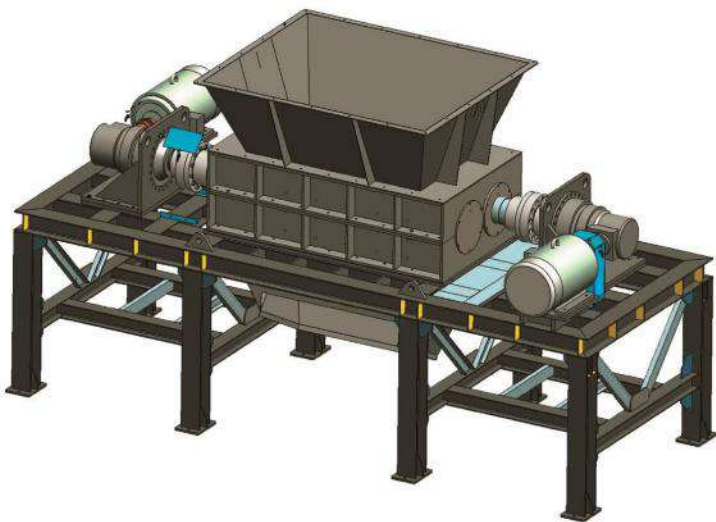
行星齿轮减速机 Planetary Reducer



联 轴 器 Coupling



液压马达 Hydraulic Motor



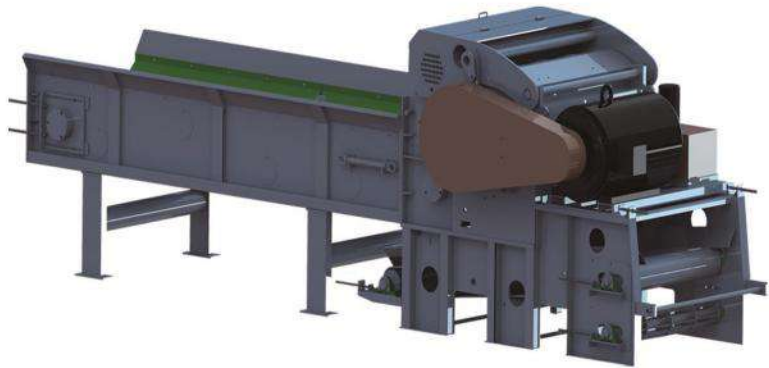
双轴撕碎机是一种通过剪切、撕裂和挤压达到减小物料尺寸的工业设备，广泛应用于废塑料、废橡胶、木材和其他大体积或多个废弃物的回收处理。具有高效、耐用、易于维护的特点，是废旧资源回收利用领域中的重要设备。

- 1 高效破碎：通过两个相互配合的刀辊，每个刀辊由独立的电机驱动，形成高扭矩的剪切力，能够快速高效地完成破碎工作。
- 2 适应性强：适用于各种废旧物料，如废塑料、废橡胶、木材、废旧家电、废旧车辆等。
- 3 易于维护：结构设计合理，维护方便，使用寿命长。
- 4 低噪音和低能耗：采用低转速、大扭矩剪切设计，减少噪音和能耗。

The double-shaft shredder is an industrial equipment that reduces the size of materials by shearing, tearing and squeezing. It is widely used in the recycling of waste plastics, waste rubber, wood and other large-volume waste. It is an important equipment in the field of waste resource recycling with the characteristics of high efficiency, durability and easy maintenance.

- 1 Efficient crushing: Through two mutually coordinated knife rollers, each knife roller is driven by an independent motor to form a high-torque shear force, which can quickly and efficiently complete the crushing work.
- 2 Strong adaptability: Suitable for various waste materials, such as waste plastics, waste rubber, wood, waste home appliances, waste vehicles, etc.
- 3 Easy to maintain: reasonable structural design, easy maintenance and long service life.
- 4 Low noise and low energy consumption: low speed and high torque shear design are adopted to reduce noise and energy consumption.

综合破碎机 Comprehensive Wood Crusher



综合破碎机是由机座、刀辊、上下喂料机构、送料装置和液压缓冲系统组成，主要用于原木、建筑模板、拆迁料、模板等物料的破碎粉碎。

木材破碎机其主要是靠冲击能来完成破碎木材作业。锤式综合破碎机工作时，电机带动转子作高速旋转，木材均匀的进入综合破碎机腔中，高速回转的锤头冲击、剪切撕裂木材致木材被破碎，同时木材自身的重力作用使木材从高速旋转的锤头冲向架体内挡板、筛条，在转子下部，设有筛板、破碎木材中小于筛孔尺寸的粒级 通过筛板排出，大于筛孔尺寸的木材阻留在筛板上继续受到锤子的打击和研磨。主要用于圆木、小径木、枝丫、枝条、板皮、板条、毛竹等物料的破碎。

The comprehensive crusher is composed of a machine base, knife rotor, upper and lower feeding mechanisms, feeding devices, and hydraulic buffering systems. It is mainly used for crushing and crushing materials such as wood log, construction templates, demolition materials, and templates.

The wood crusher mainly relies on impact energy to complete the task of crushing wood. The hammer type comprehensive crusher, when in operation, the motor drives the rotor to rotate at high speed, and the wood uniformly enters the chamber of the comprehensive crusher. The high-speed rotating hammer head impacts, cuts and tears the wood, causing it to be broken. At the same time, the gravity of the wood itself causes the wood to rush from the high-speed rotating hammer head to the baffle and sieve bar inside the frame. A sieve plate is installed at the lower part of the rotor, and the particles smaller than the sieve hole size in the crushed wood are discharged through the sieve plate. The wood larger than the sieve hole size is retained on the sieve plate and continues to be hit and ground by the hammer. It is mainly used for breaking round wood, small diameter wood, branches, branches, boards, Flat noodles, bamboo and other materials

型号 Model	产量 Capacity(t/h)	电机功率 Power(kw)	进料尺寸 Inlet Size(mm)	削片尺寸 Chips Size (mm)
YMPJ 216	4-6	55+3+4+1.5	545*230	30-110
YMPJ 218	6-10	110+5.5+5.5+1.5	710*360	30-110
YMPJ 2113	15-25	315+11+11+3	1100*530	30-110
YMPJ2116	40-60	450+18.5*2+4+5.5	1250*700	30-50
YMPJ1300-300	6-10	110+5.5+5.5+1.5	1300*300	30-110
YMPJ1300-600	12-15	160+7.5+7.5+3	1300*600	30-110
YMPJ1400	15-20	220+7.5+7.5+3+3	1400*600	30-110
YMPJ1650	18-25	220+11+7.5+3+4	1650*600	30-110

移动式柴油木片机 Mobile Diesel Wood Chipper



喂料辊 Feed Roller



液压马达 Hydraulic motor



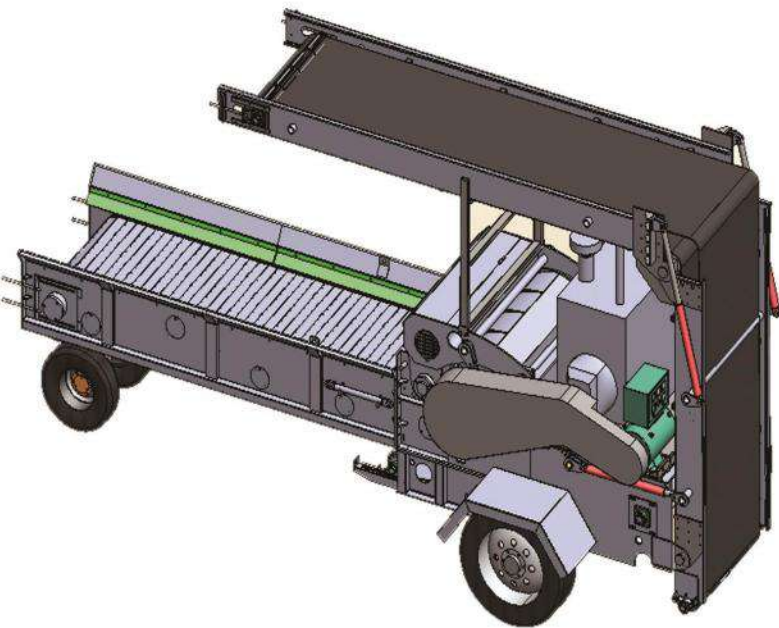
柴油机组 Diesel Generator



筛网 Screen Mesh



折叠皮带输送机 Folding Belt Conveyor



移动式柴油木片机是我公司推出的一款灵活性更强的削片设备，采用柴油机作为动力，可牵引户外生产，移动性强、流动生产效果更好，主要适用于树枝、树干、竹子、麻杆、烟杆、秸秆等物料的破碎处理，破碎后物料1-3cm，厚度5mm，是处理废弃木质类物料的更好选择。

移动式削片机优点：

- 1、柴油机作动力，可移动，灵活性高
- 2、进料口尺寸大，适应物料广
- 3、进料辊正反可调，防止物料堵塞
- 4、采用定刀、动刀相结合，有效控制物料细度

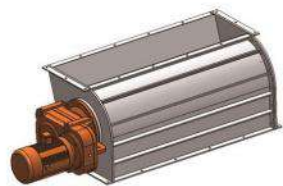
The mobile diesel wood chipper machine is a more flexible chipping equipment launched by our company. It uses a diesel engine as power and can pull outdoor production. It has strong mobility and better flow production effect. It is mainly suitable for crushing materials such as tree branches, trunks, bamboo, hemp stalks, tobacco stalks, straw, etc. After crushing, the material is 1-3cm thick and 5mm thick, making it a better choice for processing waste wooden materials.

Advantages of mobile wood chipper.

- 1.Powered by diesel engine, movable, highly flexible
- 2.It has a large feed inlet size to adapt to a wide range of materials.
- 3. The feed roller can be adjusted in both directions to prevent material blockage.
- 4. It use combination of fixed and moving knives to effectively control the fineness of materials

型号 Model	产量 Capacity(t/h)	柴油机功率 Power(kw)	进料口尺寸 Inlet Size(mm)	木片尺寸 Chips Size (mm)
YMPJ40C	1-2	30	300*200	30-110
YMPJ216C	3-5	75	545*230	30-110
YMPJ218C	6-10	147	710*360	30-110
YMPJ1300	8-12	255	1300*600	30-110
YMPJ1400	15-20	288	1400*700	30-110
YMPJ2113	20-25	355	1100*530	30-110

高效粉碎机
 High Efficiency Hammer Mill



强制喂料器
 Forced Feeder



脉冲除尘器
 Pulse Dust Collector



转子
 Rotor



筛网
 Screen Mesh



风机+消音器
 Fan Blower+Silencer



高效粉碎机是让物料进入粉碎室，通过高速旋转的转子产生的冲击力、剪切力和物料间的相互撞击力把物料粉碎，经筛网筛选后达到指定规格的产品。：

- 1.电机跟转子直连，转速达1500-3000r/min，动力损耗低，效率高。
 2.双侧筛网出料，增加出料面积，提高产能。
 3.机身独特结构设计，下料流畅，无死角。
 4.筛网孔径可调，保证成品粒度需求旋风除尘、布袋除尘相结合除尘效果好。

High efficiency hammer mill working principle is that the raw material go into the grinding chamber, then will be grinding by the impact force and shear force caused by high speed rotating rotor and collision force caused by the high speed rotating rotor, then pass through the screen to get the eligible products.

- 1.The motor connect rotor directly, the rotating speed can be 1500-3000r/min, lower power loss and higher efficiency.
 2.Discharge from both side sieve, increased the discharge area and improved capacity.
 3.The machine body adopts unique structural design, discharge smoothly no blind spots.
 4.The particle of screen mesh can be adjusted, ensure finished products requirement.
 5.Work with cyclone and bag dust collector, more better dedusting efficiency.

型号 Model	产量 Capacity(t/h)	电机功率 Power(kw)	外形尺寸 Diemension(mm)	锤片 (Hammer Qty.)
YGFS65*55	1-2	37/45	2300*1165*2100	48
YGFS65*75	2-3	55/75	2755*1165*2100	72
YGFS65*100	3-4	90/110	3100*1165*2100	96
YGFS120*75	4-6	132/160	3475*1860*2906	72
YGFS120*100	6-8	160/200	3145*1820*3060	96
TGFS120*150	8-15	315	3900*2000*3745	144

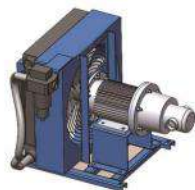
木屑颗粒机 Biomass Pellet Machine



模 具 Ring Die



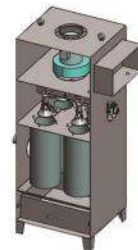
润滑油泵 Lubricating Grease pump



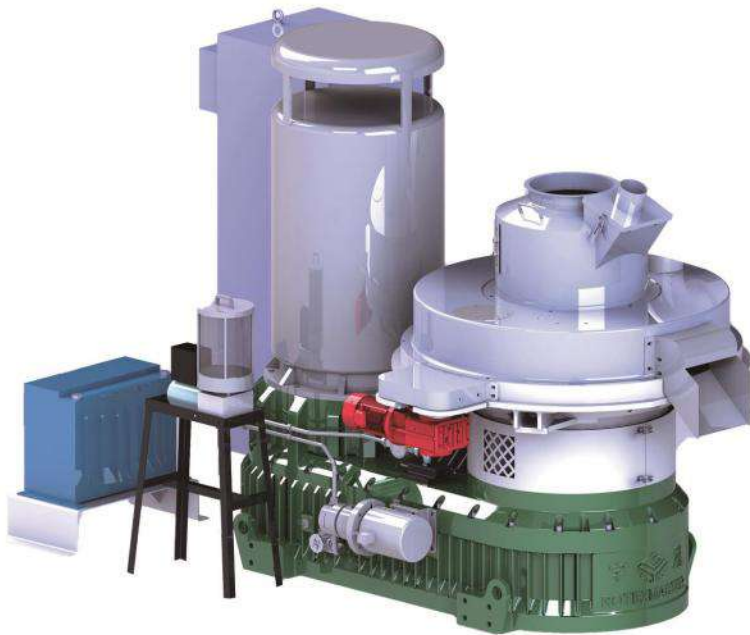
风冷冷却器 Gearbox Air Cooled Cooler



齿 轮 箱 Gear Box



除 尘 器 Dust Collector



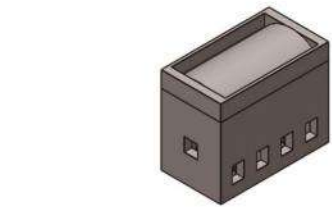
- 新式立式离心制粒机是目前国内最新型颗粒机。此结构颗粒机采用大模数硬齿面斜齿减速箱，主轴强化，动力输出强，设备使用稳定，故障率低，生产成本低。是生物质制粒成型首选主机机型。
- 1. 模具平放，进料方式为垂直直接进料，避免了物料堵塞情况，物料适应范围广，散热性强。
 - 2. 核心部件：模具材质为耐磨不锈钢材质，真空炉渗碳热处理，热处理硬度均匀，耐磨性强。模具立式双层，提高利用率，减少成本，性价比最高。
 - 3. 电机与齿轮箱通过梅花联轴器连接，更加易于拆卸维护保养，齿轮箱三级减速，承载能力强，主轴独特的分离设计，保证设备的同心度，减少设备的故障率。
 - 4. 机器自带润滑冷却系统，无需停机，整机实现24小时全自动间歇式润滑，延长设备易损件寿命。
 - 5. 独特的拨料系统回转装置外置设计，回转支承不再受机器出料罩内高温蒸汽的侵蚀，大大延长了拨料系统回转装置的使用寿命。

The new vertical centrifugal pellet machine is the latest pellet machine in China. The pellet machine adopts a large modulus hard toothed helical gearbox, strengthened spindle, strong power output, equipment stable operation, low failure rate, low production cost. It is the preferred machine model in the biomass industry.

- 1. The mold is placed flat, and the feeding method is vertical direct feeding, which avoids material blockage, has a wide range of material adaptability and strong heat dissipation.
- 2. Core components: The mold is made of wear-resistant stainless steel, vacuum furnace carburizing heat treatment, uniform heat treatment hardness, and strong wear resistance. The mold is vertical double-layer, which improves utilization, reduces costs, and has the highest cost performance.
- 3. The motor and gearbox are connected through a plum blossom coupling, which is easier to disassemble and maintain. The gearbox has three-stage reduction and strong load-bearing capacity. The unique separation design of the main shaft ensures the concentricity of the equipment and reduces the failure rate of the equipment.
- 4. The machine has its own lubrication and cooling system, no need to stop, and the whole machine can achieve 24-hour fully automatic intermittent lubrication, extending the life of the equipment's wearing parts.
- 5. The unique external design of the rotary device of the material feeding system means that the slewing bearing is no longer corroded by the high-temperature steam in the machine's discharge cover, which greatly extends the service life of the rotary device of the material feeding system.

型号 Model	产量 Capacity(t/h)	功率 Power(t/h)	外形尺寸 Diemension(mm)	颗粒规格 Pellet Size(mm)
YGKJ560	1-2	90/110/132	2200*1280*1640	6-12
YGKJ700	2-3	160/200	2450*1400*1950	6-12
YGKJ880	3-4	220/250	2800*1720*2130	6-12
YGKJ1280	8-15	800/1000	4960*2950*3550	6-12

单筒烘干机 Single Drum Rotary Dryer



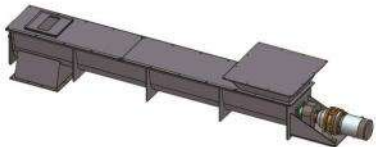
热风炉沉降室
Hot Air Stove & Setting Chamber



旋风除尘器 卸料关风机
Cyclone Dust Collector Discharge Air Lock



皮带输送机 Belt Conveyor



进料螺旋输送机 Feeding Screw Conveyor



烘干机筒体 Dryer cylinder



滚筒烘干机主要由筒体、辊圈、底座挡辊、尾部除尘设备组成，通过热风 and 物料在筒体内接触，经过筒内扬料板结构设计，使物料和热风充分接触从而达到烘干效果的烘干设备

- 1.干燥器内载热体直接与被干燥物料接触，主要靠对流传热，热利用率较高，使用广泛；
- 2.抄板在筒体内部为螺旋式分布，可以起到更好的扬料效果，通过不同角度布置的抄板使筒体截面料幕达到筒体截面积的80%以上，增加被干燥物料与筒内热空气的接触面积，从而提高烘干效率；
- 3.回转筒体转速变频可调，可根据不同物料水分和进风温度灵活调节筒体转速，使干燥效果达到最佳；
- 4.进出料密封罩采用鳞片式不锈钢板密封装置，降低了进出料罩处的漏风，从而提高烘干效率

The rotary dryer is mainly composed of a drum, a roller ring, a base roller, and a tail dust removal device. The hot air and the material are in contact in the drum, and the material and the hot air are fully in contact through the lifting plate structure design in the drum to achieve the drying effect.

- 1. The heat carrier in the dryer is in direct contact with the dried material, mainly relying on convection heat transfer, with high heat utilization rate and wide use;
- 2. The lifting plate is spirally distributed inside the drum, which can achieve a better lifting effect. The lifting plates arranged at different angles make the drum cross-section material curtain reach more than 80% of the drum cross-sectional area, increasing the contact area between the dried material and the hot air in the drum, thereby improving the drying efficiency;
- 3. The rotating drum speed is variable frequency adjustable, and the drum speed can be flexibly adjusted according to the moisture content of different materials and the inlet air temperature to achieve the best drying effect;
- 4. The inlet and outlet sealing cover adopts a scale-type stainless steel plate sealing device, which reduces the air leakage at the inlet and outlet cover, thereby improving the drying efficiency

型 号 Model	功 率 Power	蒸发量 Evaporation	倾斜角度 Tilt Angle
YGHG1.2*12	5.5+15+2.2+1.5 kw	0.3-0.6T/H	2-3°
YGHG1.5*12	11+18.5+3+2.2kw	0.47-0.91T/H	2-3°
YGHG1.8*18	18.5+37+3+2.2 kw	1.01-1.90T/H	2-3°
YGHG2.0*18	18.5+55+5.5+2.2kw	1.25-2.3T/H	2-3°
YGHG2.2*24	22+90+5.5+2.2 kw	2.02-3.36/H	2-3°
YGHG2.5*24	22+90+5.5+3 kw	2.61-4.16T/H	2-3°
YGHG3.0*24	30+132+5.5+3kw	3.76-5.6T/H	2-3°
YGHG3.5*24	37+132+5.5+5.5kw	5.5-7.2T/H	2-3°

三 筒 烘 干 机 Three Cylinder Rotary Dryer



旋风燃烧炉 Vertical Cyclone Stove



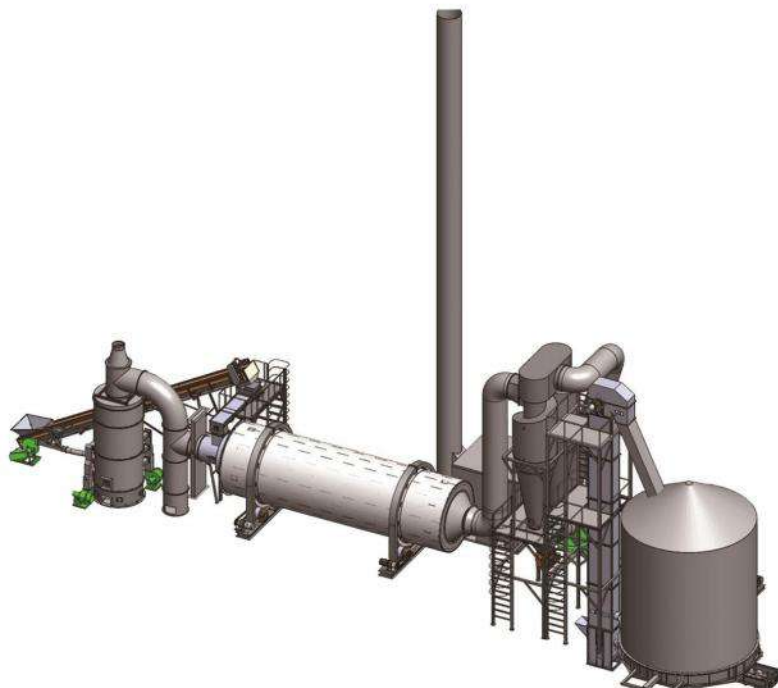
沙 克 龙 Cyclone



皮带输送机 Belt Conveyor



烘干机筒体 Dryer cylinder



三筒烘干机是由三道筒体设计组成，物料经过三道筒体内回旋，充分利用热能将物料烘干到指定的水分要求。

产品特点：

- 1、筒体分三层，外层筒体可利用内筒和中筒散发的热量，提高了热量的利用效率，一定程度降低燃料消耗；
- 2、干燥器内载热体直接与被干燥物料接触，主要靠对流传热，热利用率较高，使用广泛；
- 3、物料在滚筒内呈矩形多回路方式行进，达到干燥效果的物料在热风作用下快速行进排出滚筒，没有达到干燥效果的湿物料因自重而不能快速流动，增加湿物料干燥时间，保证物料充分干燥；
- 4、三层筒体结构设计，整体占地面积大大缩短，结构更加紧凑。

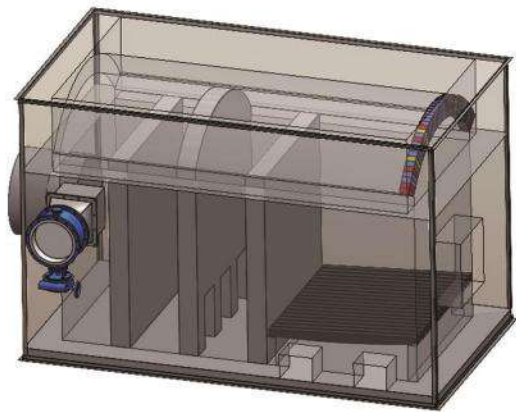
The three cylinder rotary dryer is composed of three drums. The materials rotate in the three drums, making full use of heat energy to dry the materials to the specified moisture requirements.

Product features:

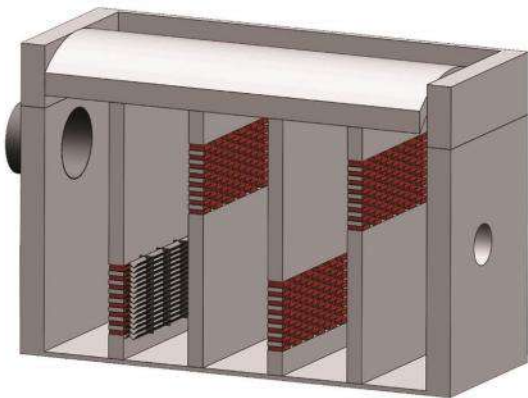
- 1. The drum is divided into three layers. The outer drum can use the heat emitted by the inner and middle drums to improve the utilization efficiency of heat and reduce fuel consumption to a certain extent;
- 2. The heat carrier in the dryer is in direct contact with the dried material, mainly relying on convection heat transfer, with high heat utilization rate and wide use;
- 3. The material moves in a rectangular multi-circuit manner in the drum. The material that achieves the drying effect moves quickly out of the drum under the action of hot air. The wet material that does not achieve the drying effect cannot flow quickly due to its own weight, which increases the drying time of the wet material and ensures that the material is fully dried;
- 4. The three-layer drum structure design greatly shortens the overall footprint and makes the structure more compact.

型号 Model	功率 Power	蒸发量 Evaporation	转速 Speed/Kecepatan
YSHG1.8×10×3	2.2*4+37+3+2.2 Kw	0.8-1.4 t/h	4-10 r/min
YSHG2.2×10×3	3×4+55 +5.5+3Kw	1.2-1.8 t/h	4-10 r/min
YSHG2.5×10×3	5.5*4+75+5.5+5.5 Kw	2.0-3.0 t/h	4-10 r/min
YSHG3.0×10×3	5.5*4+90+5.5+5.5 Kw	2.8-4.0 t/h	4-10 r/min
YSHG3.5X10X3	7.5*4+110+5.5+5.5KW	3.5-6.0 t/h	4-10 r/min

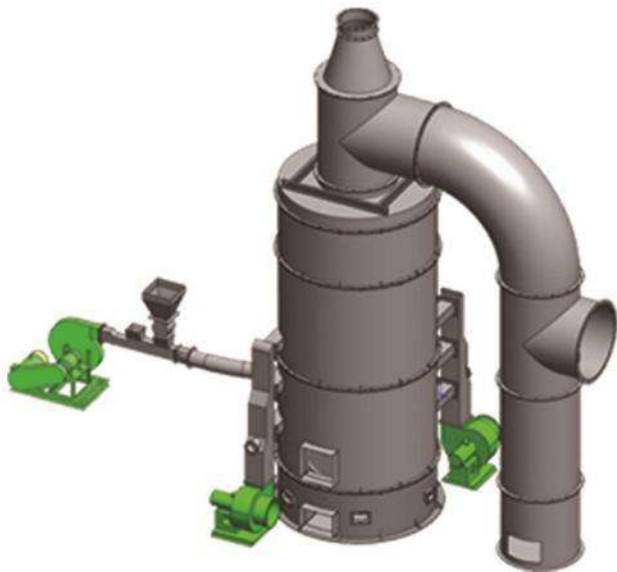
手 烧 炉 Hot Air Stove



沉 降 室 Settling Chamber

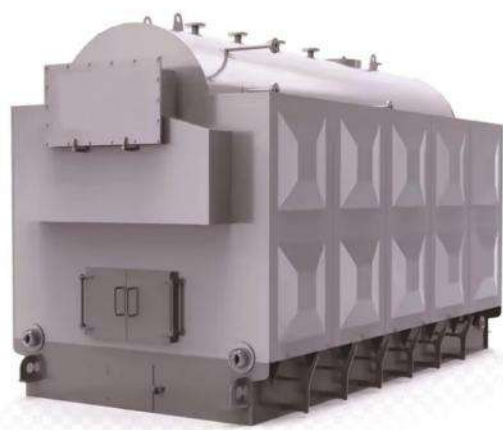


立 式 旋 风 炉 Vertical Cyclone Stove



生物质能源系列 Biomass Energy Series

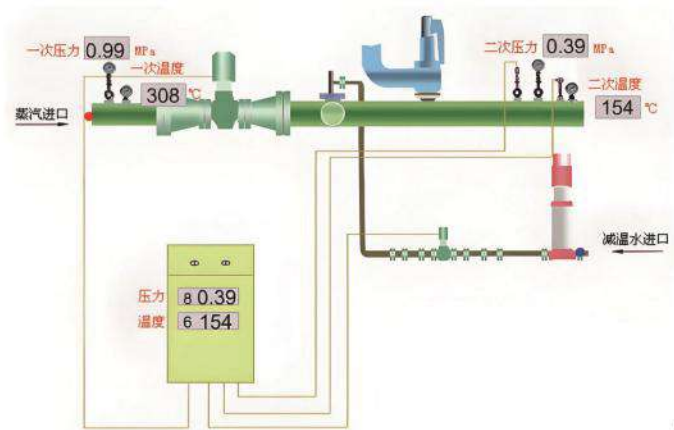
链 排 式 / 往 复 式 炉 排 热 风 炉 Chain Stove



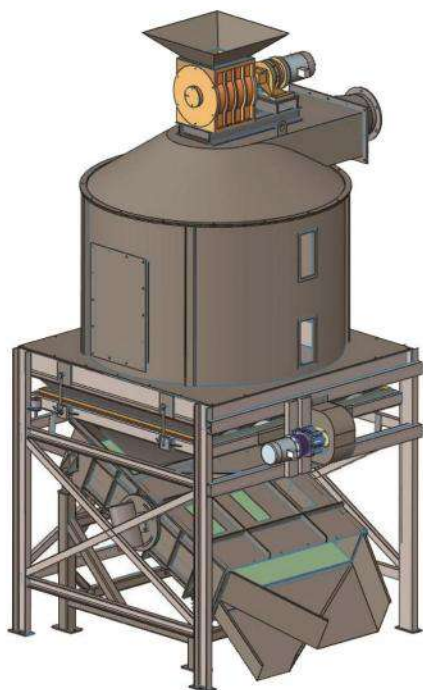
生 物 质 燃 烧 机 Biomass Burner



蒸 汽 热 源 Steam Heat Source



逆流式冷却机 Counter Flow Cooler

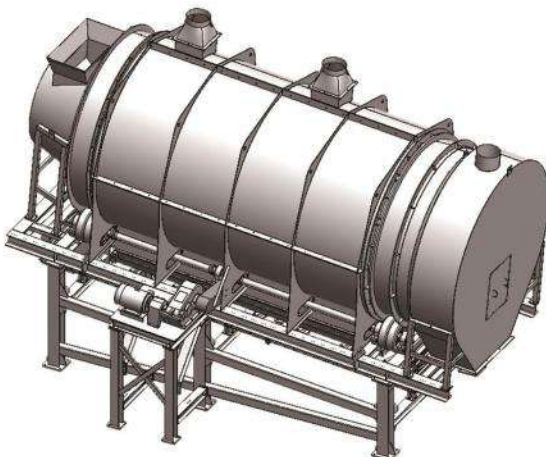


逆流式冷却器是目前国际上比较先进的一种新型冷却器，它是利用逆流冷却原理对高温、高湿度的颗粒料进行冷却。自然风垂直穿过料层，先与料层相接触，逐步变热的热风与热料相接触，风流方向与料流方向相反，使颗粒料顺向逐步冷却，可避免因冷风与高温颗粒料直接接触，使颗粒骤冷而引起的颗粒表面开裂。空气从其底部全方位进入冷却器，进风面积大，利用率高，能耗低，操作简便，冷却效果显著。颗粒冷却充分、均匀，采用独特的滑阀震动是机械排料、运转平稳、排料流畅、冷却后的颗粒温度为室温+5~15℃。

The counter flow cooler is a new type of cooler that is relatively advanced in the world. It uses the counterflow cooling principle to cool high-temperature and high-humidity pellet materials. The natural wind passes through the material layer vertically, first contacts the material layer, and gradually The heated hot air is in contact with the hot material, and the direction of the air flow is opposite to the direction of the material flow, so that the pellet material is gradually cooled in the same direction, which can avoid the surface cracking of the pellets caused by the direct contact between the cold air and the high-temperature pellet material. Air enters the cooler from all directions from its bottom, with large air inlet area, high utilization rate, low energy consumption, easy operation and remarkable cooling effect. The pellets are fully and evenly cooled. The unique slide valve vibration is used for mechanical discharging. The operation is stable and the discharging is smooth. The temperature of the cooled pellets is room temperature +5~15℃.

型号 (Model)	产量 Capacity(t/h)	冷却容量 Cooling capacity(m³)	冷却时间 Cooling time(min)	冷却后料温 Cooling temperature(°C)	配用总功率 Power(kw)	吸风量 Air intake(m³/h)
YSKLN1.2	0.8-1.2t/h	1.2	≥10min	室温+5~15℃	0.55+0.55+5.5	3407-3852m³/h
YSKLN1.5	1.2-2.0t/h	1.5	≥10min	室温+5~15℃	0.55+1.1+7.5	3130-4792m³/h
YSKLN2.5	2.0-4.0t/h	2.5	≥10min	室温+5~15℃	0.55+1.1+11	3130-4792m³/h
YSKLN4	4.0-6.0t/h	4.0	≥10min	室温+5~15℃	1.1+1.1+22	6032-9500m³/h
YSKLN6	5.0-8.0t/h	6.0	≥10min	室温+5~15℃	1.5+2.2+37	6590-11017m³/h
YSKLN10	8.0-10t/h	10	≥10min	室温+5~15℃	1.5+3.0+45	8588-13525m³/h

滚筒筛 Rotary Screen

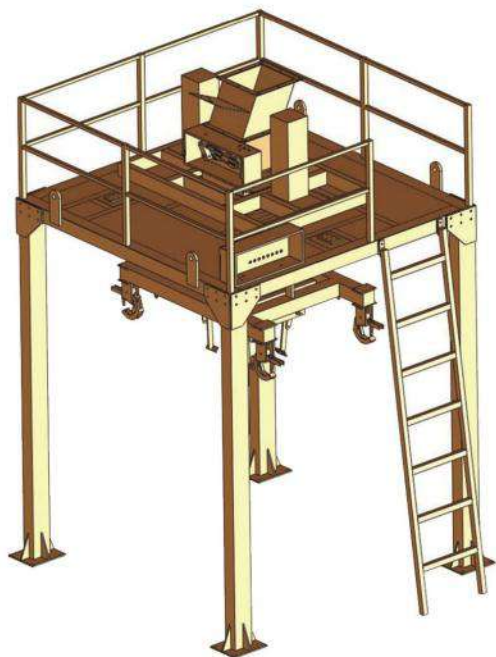


滚筒筛主要有电机、减速机、滚筒装置、机架、密封盖、进出料口组成。滚筒装置倾斜安装于机架上。电动机经减速机与滚筒装置通过联轴器连接在一起，驱动滚筒装置绕其轴线转动。当物料进入滚筒装置后，由于滚筒装置的倾斜与转动，使筛面上的物料翻转与滚动，使合格物料（筛下产品）经滚筒后端底部的出料口排出，不合格的物料（筛上产品）经滚筒尾部的排料口排出。由于物料在滚筒内的翻转、滚动，使卡在筛孔中的物料可被弹出，防止筛孔堵塞。

The rotary screen mainly consists of motor, reducer, drum device, frame, sealing cover, and inlet and outlet. The roller device is installed obliquely on the frame. The motor is connected to the drum device through the reducer through a coupling, driving the drum device to rotate around its axis. When the material enters the drum device, due to the tilt and rotation of the drum device, the material on the screen surface is turned and rolled, making the material pass the screen. Materials (products under the screen) are discharged through the discharge port at the bottom of the rear end of the drum, and unqualified materials (products above the screen) are discharged through the discharge port at the tail of the drum. Due to the flipping and rolling of materials in the drum, materials stuck in the screen holes can be ejected to prevent the screen holes from being blocked.

型号 Model	产量 Capacity(t/h)	尺寸 Diemension(mm)	功率 Power(kw)
YGTS100x2	1-2	2800x1300x1460	1.5
YGTS130X3	1.5-4	4420X1500X3800	3
YGTS150x4	3-5	5160x1700x4400	4
YGTS180x5	5-10	6300x2200X2600	4
YGTS200x6	8-12	7000x2500x5000	5.5

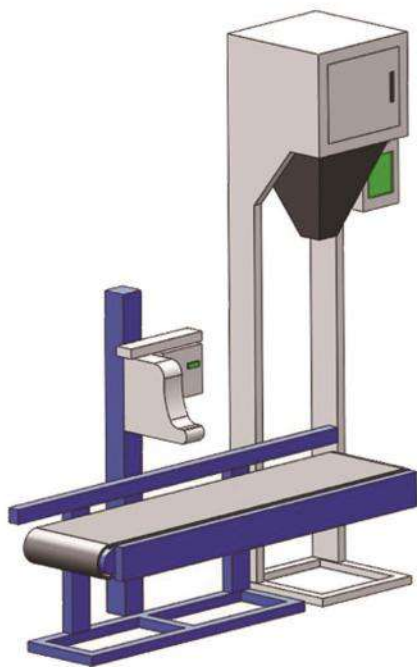
吨包称 Ton Bag Packing Machine



吨包秤广泛应用于精细化工、粮油、建材、橡塑等行业的颗粒状、片状、粉状物料的定量包装。吨包装半自动包装机适用于500~2000kg的定量计量包装。产品选型根据被包装物料的具体特性而灵活选用不同的产品型号，如重力式给料方式、螺旋给料方式等不同类型吨包装秤。包装控制精度为0.1级。根据物料的特性和用户现场的安装空间可以灵活选用不同类型的包装机。

Ton Bag Packing Machine is widely used to pack pellets, chips or powder from fine chemicals, food and oil industry, building material, rubber or plastics fields. The weighing scope of semi-automatic packing machine is 500-2000 kg per bag with exact calculation. According to material features and clients' factory, we will recommend different machine types for you, such as gravity feed for packing machine, screw feed one.

电脑定量包装秤 Computer Controlled Packing Machine



电脑定量包装秤主要由自动称重装置、输送装置、缝包装置、电脑控制等四大部分组成。具有结构合理，造型美观，运行平稳，节能省电，操作方便，称重精确的特点。

主机采用螺旋式下料，快、中、慢三速控制计量，先进的数字变频技术、采样处理技术、抗干扰技术，并实现误差自动补偿和修正。

Controlled Packaging Machine is mainly composed by automatic weighing device, conveyor, sewing equipment, computer control box, etc. It is advanced design and combines weighing and packing. It saves labor and improves wood pellet bagging efficiency. What's more, it can largely improve the precision of pellet packing and at the same time will lower the damage to the pellets comparing with the labor work. The packing machine adopt screw feeding with large, medium, small, three-speed control measure. It possesses top digital inverter and sampling technology, interference and achieve error automatic compensation and correction. The packaging machine is widely used in kinds of materials package by the gravity themselves, such as feed pellet, fertilizer, plastic seeds, food or chemicals.

集装箱颗粒装箱系统 Wood Pellet Container Loading System



码头移动式颗粒装船系统 Port Mobile Wood Pellet Ship Loading System



料仓仓储系统 Silo Storage System



生物质能源系列 Biomass Energy Series

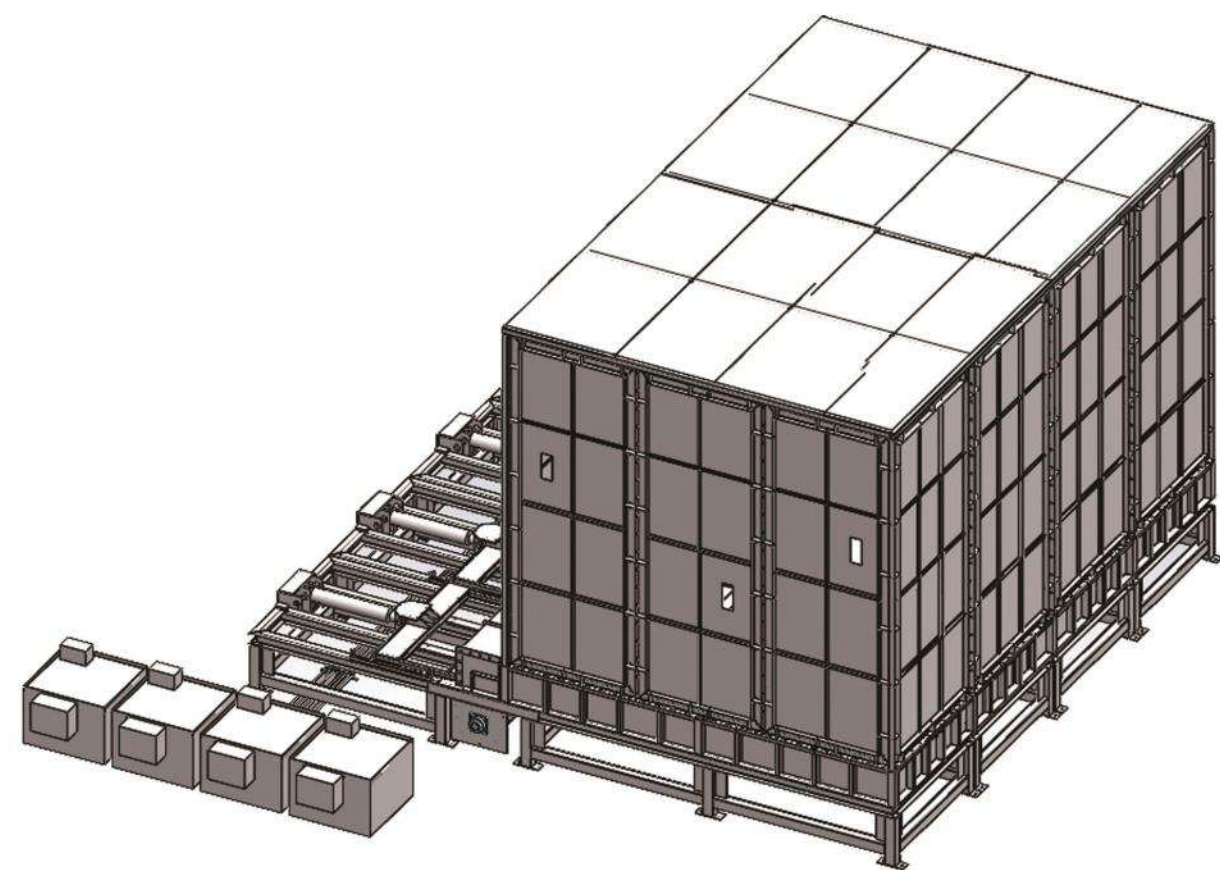
颗粒专用钢板仓 Pellet Storage Steel Silo



2000 m³ A型料仓 2000m³A-type silo



液压滑架料仓
 Hydraulic Carriage Silo



液压料仓特点：

1. 液压料仓，适用于各类片状，粉状物料的存储，仓底采用液压滑架机构，不会产生物料架桥起拱的现象
2. 液压料仓滑架驱动液压系统精准控制，液压系统压力，流量可调，液压油缸行进速度可调，液压油缸行程可调，从而控制液压仓出料量
3. 液压仓配置料位监测系统，与进出仓设备联动控制，系统控制自动化程度高

Hydraulic silo features:

1. Hydraulic silo is suitable for storing all kinds of flake and powder materials. The bottom of the silo adopts a hydraulic slide mechanism, which will not cause the material to bridge and arch.
2. The hydraulic system of the hydraulic silo slide drive is precisely controlled. The hydraulic system pressure and flow are adjustable. The hydraulic cylinder travel speed and stroke are adjustable, so as to control the discharge volume of the hydraulic silo.
3. The hydraulic silo is equipped with a material level monitoring system, which is linked with the in-and-out equipment for control, and the system control has a high degree of automation

秸秆旋切机 Straw Rotary Cutter



刀 辊 Knife Rotor



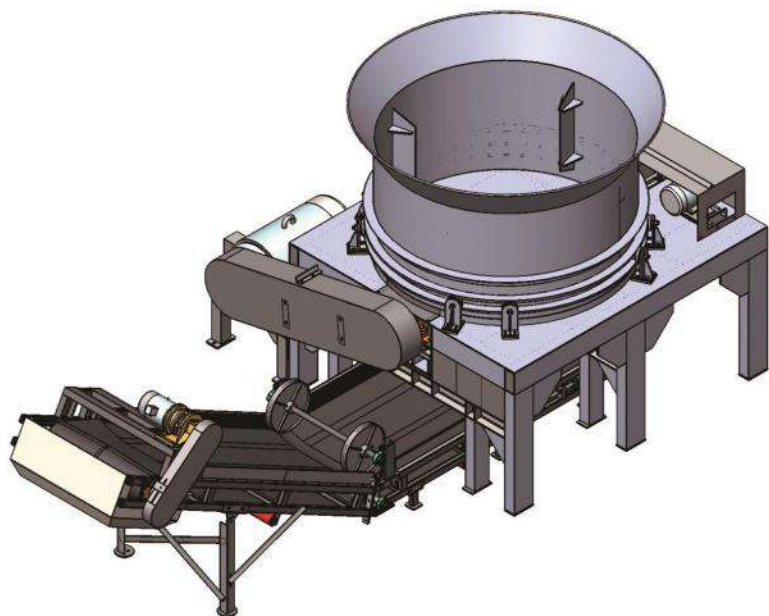
刀 片 Blade



揉丝刀片 Shredding Blade



出料皮带
Discharge Belt Conveyor



秸秆旋切机是一款专门处理打捆秸秆物料的粗粉碎设备，通过高速的转子，将成捆的物料切断成3-5公分的成品物料。设备设计紧凑合理，性能稳定，操作方便，主要适用于打捆的麦秆、玉米秸秆、稻秆、大豆秸秆、烟秆等物料的粉碎处理。

喷式旋切机特点：

- 1.进料口径大，进料方便，投料迅速，
- 2.产能输出量大，效率高
- 3.采用链条驱动旋转拨料，粉碎无死角
- 4.喷式出料，出料顺畅，提高产能

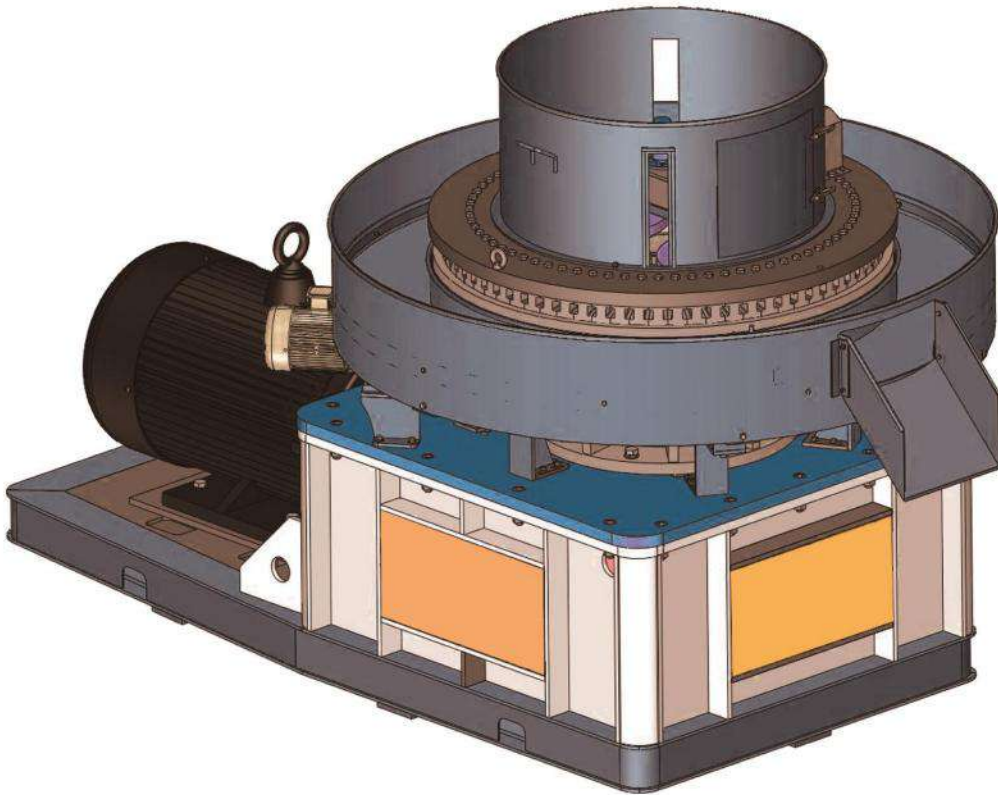
The straw rotary cutter is a coarse crushing equipment specially used for processing baled straw materials. It cuts the bundled materials into 3-5 cm finished materials through a high-speed rotor. The equipment has a compact and reasonable design, stable performance, and easy operation. It is mainly suitable for crushing baled wheat straw, corn straw, rice straw, soybean straw, tobacco straw and other materials.

Features of the spray rotary cutter:

- 1. Large feed diameter, convenient feeding, and rapid feeding.
- 2. Large output capacity and high efficiency
- 3. The chain is used to drive the rotary feeder, and there is no dead angle in the crushing
- 4. Spray discharge, smooth discharge, and improved production capacity

型号 (model)	主机功率 (kw)	外形尺寸 (mm)	产量 (t/h)
YXQJ2	110	3270*1900*3440	3-4
YXQJ3	160	3500*2100*3730	6-8

压块机 Briquetting Machine



生物质压块机是将经过粉碎后的秸秆（3.2cm以内）或者锯末原材料，在水分控制在10-25%范围内的情况下，通过主轴转动带动压辊旋转，产生离心力将物料从模具孔中挤压出3cm块状成品的一款机器。

生物质压块机特点：

- 1、操作简单使用方便，自动化程度高，用工少，效率高。
- 2、采用双压辊结构:使主轴受力均匀，机器运转平稳、降低功耗。
- 3、模具和压辊采用特种合金材质，耐磨、耐压、耐高温，连续工作不变形，使用寿命是原来的3-4倍。
- 4、设备采用全自动注油方式，全时间定时供油，省心、省力、省时，大大提高了使用寿命。
- 5、设备适用物料范围广：农作物秸秆、农作物果壳、锯末等农林废弃物。

Biomass briquetting machine is one equipment which use smashed straw (within 3.2cm or less) or sawdust material that moisture controled amony 10-25% as raw material.By spindle rotates to drive the pressure roller to rotate, the machine produce centrifugal force to press the material from the die hole.The machine produce wood briquette with size of 3cm as finished product.

Biomass briquetting machine features:

- 1. easy operation, convenient to use, high automation, less labor and high efficiency.
- 2. Adopt double roller structure: main shaft forcing evenly, machine running smoothly, reduce power consumption.
- 3. Mold and roller are made of special alloy material, wear-resistant, pressure resistant, high temperature resistant, can continuous work without deformation, service life is 3-4 times than original.
- 4. The equipment adopts full automatic oil filling mode. The whole time supplies oil regularly, saving energy, saving time and greatly improving the service life.
- 5. Equipment for a wide range of materials: crop straw, crop husk, sawdust and other agricultural and forestry waste.

型号 Model	功率 Power(kw)	孔数 Hole qty.	产量 Capacity(t/h)	成型尺寸 Briquette size(mm)	备注 Remark
YKJ2000	75	55	1.5-2.5	32*32	皮带传动 belt transmission
YKJ3500	110	72	2.5-3.5	32*32	减速机 reducer

数据采集与监视控制系统(SCADA)



数据采集和历史归档：SCADA系统可以对生产线运行数据、报警数据进行采集。

- 1.生产线联动控制：可实现联动控制开关，当发生应急事件时，一键急停
- 2.生产线自动控制：手机APP，wechat进行控制
- 3.生产线分布控制，在各生产工段前，有分布控制器，便于随时观察，随时操作
- 4.企业大屏显示生产线上实时数据，设备运行状态，软件与网页随时登陆，让管理者随时掌握生产线运行状况

Data collection and historical archiving: SCADA system can collect production line operation data and alarm data.

- 1. Production line linkage control: linkage control switch can be realized, when there is an emergency, one button emergency stop
- 2. Production line automatic control: mobile phone APP and Wechat control
- 3. Production line distribution control, in front of each production section, distribution controller, easy to observe and operate at any time
- 4. The large screen displays the real-time data on the production line, the running status of equipment, and the login of software and web pages at any time, so that managers can master the running status of the production line at any time

设备配件 Equipment Accessories



刀片/Blade



锤头/Hammer



磨刀机/Knife Sharpener



电机/Motor



轴承/Bearing



电器/Electric Components



锤片/Hammer



筛网/Screen Mesh



转子/Rotor



旋风除尘器/cyclone



风 机/Fan



刮板输送机/Scraper Conveyor



模具/Ring Die



压辊/Roller



压辊皮/Roller Wrap



螺旋输送机/Screw Conveyor



大倾角皮带机/Large Angle Belt Conveyor



斗式提升机/Bucket Elevator

设备配件系列 Equipment Accessories Series

马来西亚时产10吨木屑颗粒生产线 Malaysia 10 Tons Per Hour Wood Pellet Production Line



项目产能：时产10吨木屑颗粒
运行时间：2020.6
项目简介：原材料：相思木、桉树林原木
自动化，带有中转缓存料仓，集中除尘，集中控制。
技术路线：剥皮单元→切片单元→缓存单元→细粉单元→缓存单元→烘干单元→缓存单元→制粒单元→冷却单元→缓存装车单元→码头卸车，储存，装船单元。

Project capacity: 10 tons per hour wood pellets
Operation time:2020.6
Project introduction: Raw materials:acacia,eucalyptus
automation, with transfer and buffer silos, centralized dust removal, centralized control.
Technical route: debarking section → crushing section → buffer section → grinding section → buffer section → drying section → buffer section → pelletizing section → cooling section → buffer loading section → port unloading, pellet storage, ship loading section

印度尼西亚年产13万吨颗粒生产线 Indonesia Annual 130,000 Tons Wood Pellet Production Line



项目产能：年产13万吨木屑颗粒
运行时间：2023.3
项目简介：原材料：圆木，
自动化，带有中转缓存料仓，集中除尘，集中控制。
技术路线：剥皮单元→切片单元→缓存单元→细粉单元→缓存单元→烘干单元→缓存单元→制粒单元→冷却单元→缓存装车单元。

Project capacity: Annual 130,000 tons wood pellet production line
Operation time:2023.3
Project introduction: Raw materials: wood logs, wood scraps
automation, with transfer and buffer silos, centralized dust removal, centralized control.
Technical route: debarking section → chipping section → buffer section → grinding section → buffer section → drying section → buffer section → pelletizing section → cooling section → buffer loading section

马来西亚年产5万吨木屑颗粒生产线 Malaysia Annual 50,000 Tons Wood Pellet Production Line



项目产能：时产10吨木屑颗粒，年产5万吨木屑颗粒。
运行时间：2022.10
项目简介：原材料：合欢树原木，速生经济林
自动化无尘生产线（自动化，带有料仓，集中除尘，集中控制）
技术路线：切片单元→缓存单元→细粉单元→缓存单元→烘干单元→缓存单元→制粒单元→冷却单元→包装单元

Project capacity: 10 tons per hour wood pellet, Annual 50,000 tons of wood pellet
Operation time: 2022.10
Project introduction: Raw materials: albizia Julibrissin logs, fast-growing economic forest
automated dust-free production line (automated, with silo, centralized dust removal, centralized control)
Technical route: chipping section → buffering section → grinding section → buffering section → drying section → buffering section → pelletizing section → cooling section → packing section

泰国年产11万吨秸秆颗粒气化生产线 Thailand Annual 110,000 Tons Straw Pellet Gasification Production Line



项目产能：时产10吨玉米芯颗粒，年产11万吨玉米芯颗粒。
运行时间：2022.8
项目简介：原材料：玉米皮，玉米芯，
自动化无尘生产线（自动化，带有料仓，集中除尘，集中控制）
技术路线：粗粉单元→缓存单元→烘干单元→缓存单元→细粉单元→缓存单元→制粒单元→冷却单元→气化黑颗粒

Project capacity: 10 tons per hour wood pellet, Annual 50,000 tons of wood pellet
Operation time:2022.8
Project introduction: Raw materials: corn cob, corn husk
automated dust-free production line (automated, with silo, centralized dust removal, centralized control)
Technical route: rough grinding section → buffer section → drying section → buffer section → fine grinding section → buffer section → pelletizing section → cooling section → gasification black pellet

江苏淮安年产10万吨秸秆颗粒生产线

Jiangsu Huai'an 100.000 Tons Of Straw Pellet Production Line



项目产能：时产20吨秸秆木屑颗粒

运行时间：2016.10

项目简介：原材料：秸秆、原木

自动化，带有中转缓存料仓，集中除尘，集中控制。

技术路线：切片→缓存→烘干→细粉→烘干→缓存→制粒→冷却→包装

Project capacity: 20 tons per hour straw wood pellet

Operation time: 2016.10

Project introduction: raw materials: straw, wood

automation, with transfer and buffer silos, centralized dust removal, centralized control.

Technical route: chipping section → buffer section → drying section → fine grinding section → drying section → buffer section → pelletizing section → cooling section → pack section

首农集团双河农场+黑龙江五九七（北大荒）农场年产5万吨玉米秸秆颗粒生产线

Shouong Group Shuanghe Farm + Heilongjiang No. 597 (Beidahuang) Farm Annual Production of 50,000 Tons of Corn Straw Pellets Production Line



项目产能：年产5万吨玉米秸秆颗粒

运行时间：2024.4

项目简介：原材料：玉米秸秆，

自动化生产线（自动化，带有料仓，集中除尘，集中控制）

技术路线：旋切单元→缓存单元→细粉单元→缓存单元→制粒单元→冷却单元→包装单元

Project capacity: Annual production of 50,000 tons corn straw pellet

Operation time: 2024.4

Project introduction: raw materials: corn stalks,

Automated production line (automated, with silo, centralized dust removal, centralized control)

Technical route: rotary cutting section → buffering section → grinding section → buffer section → pelletizing section → cooling section → pack section

国能潍坊寿光蔬菜尾秧秸秆造粒压块生产线

CNNE Shouguang Vegetable Straw Pellet Briquette Production Line



项目产能：时产10吨蔬菜尾秧、秸秆颗粒，年产5万吨蔬菜尾秧、秸秆颗粒。

运行时间：2023.3

项目简介：原材料：蔬菜尾秧、秸秆

自动化无尘生产线（自动化，带有料仓，集中除尘，集中控制）

技术路线：切片单元→缓存单元→细粉单元→缓存单元→烘干单元→缓存单元→制粒单元→冷却单元→包装单元

Project capacity: 10 tons per hour vegetable seedlings and straw pellets

Operation time: 2023.3

Project introduction: raw materials: vegetable seedlings, straw

automated dust-free production line (automated, with silo, centralized dust removal, centralized control)

Technical route: chipping section → buffering section → fine grinding section → buffering section → drying section → buffering section → pelletizing section → cooling section → pack section

现代牧业牛粪沼渣烘干生产线

Modern Animal Husbandry Cow Dung Sludge Drying Production Line



项目产能：时产40牛粪沼渣烘干三期项目

运行时间：2024.2

项目简介：原材料：牛粪

自动化烘干生产线

技术路线：缓存单元→烘干单元→缓存单元

Project capacity: 20 tons per hour cow dung sludge drying production line

Operation time: 2024.2

Project introduction: raw materials: cow dung

automatic drying production line

Technical route: buffer section → drying section → buffer section

生产线数据采集全自动化控制室 Production Line Data Collection Fully Automated Control Room



马来西亚3万吨颗粒储存系统 Malaysia 30,000 Tons Wood Pellet Storage System



马来西亚时产40吨综合破碎系统 Malaysia 40 Tons Per Hour Comprehensive Crushing System



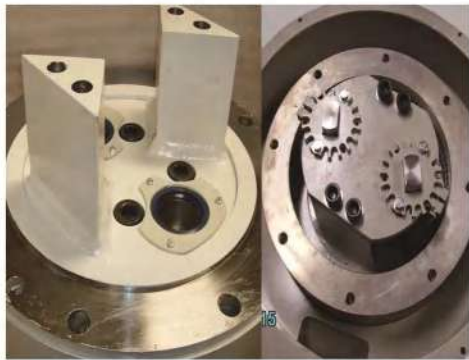
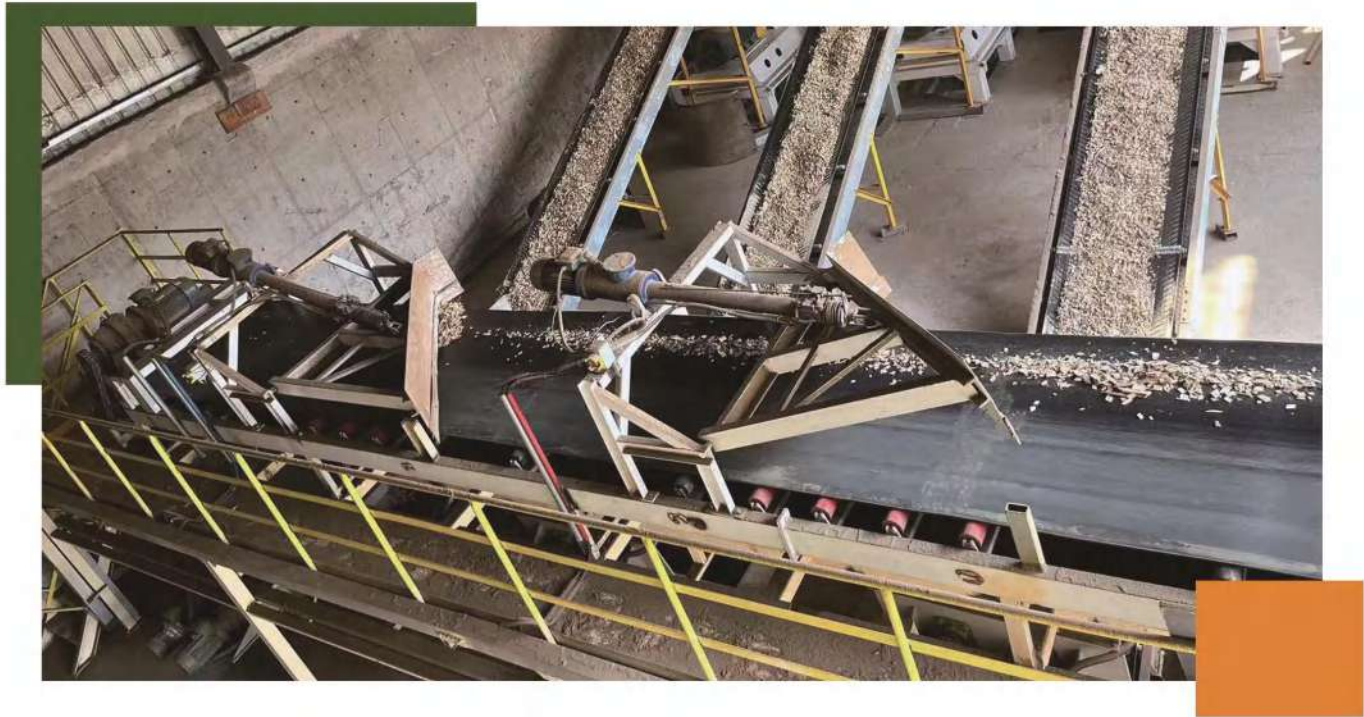
印度尼西亚2万吨/月颗粒运输系统 Indonesia 20,000 Tons Per Month Pellet Transportation System



泰国时产5吨电动与太阳能木屑颗粒生产线 Thailand 5 Tons Per Hour Electric and Solar Wood Pellet Production Line



奥斯博恩板厂时产40吨木片生产线 Osborne Board Mill 40 Tons Per Hour Wood Chip Production Line



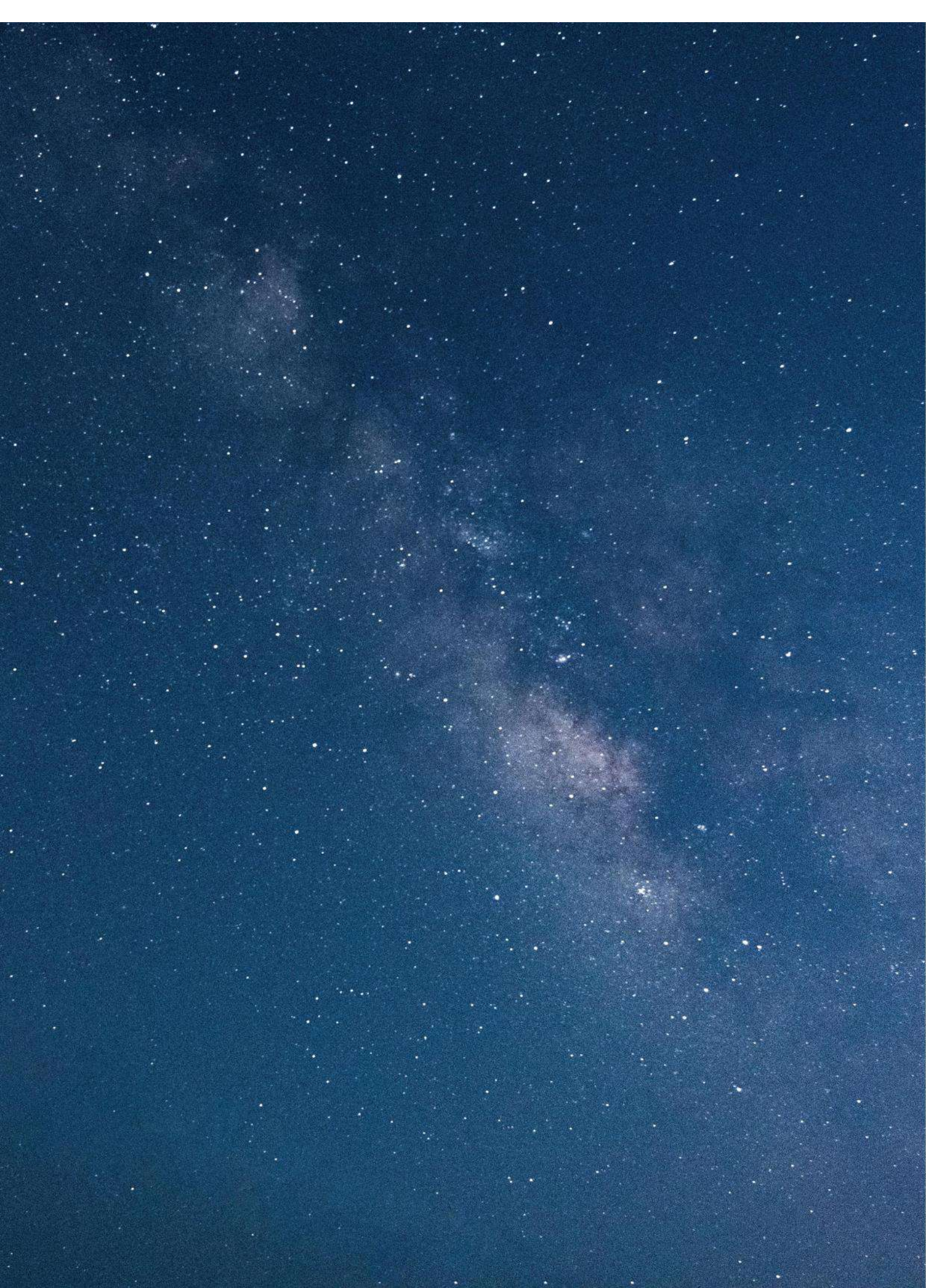
DEVELOPMENT
HISTORY

行业 发展
DEVELOPMENT



HISTORY





行 当 下 引 未 来

ACTING IN PRESENT LEADING FUTURE